

U OF U BASEBALL

America First Ballpark

The Future Home of Utah Baseball on the University of Utah Campus



VCBO
POPULOUS

U OF U BASEBALL

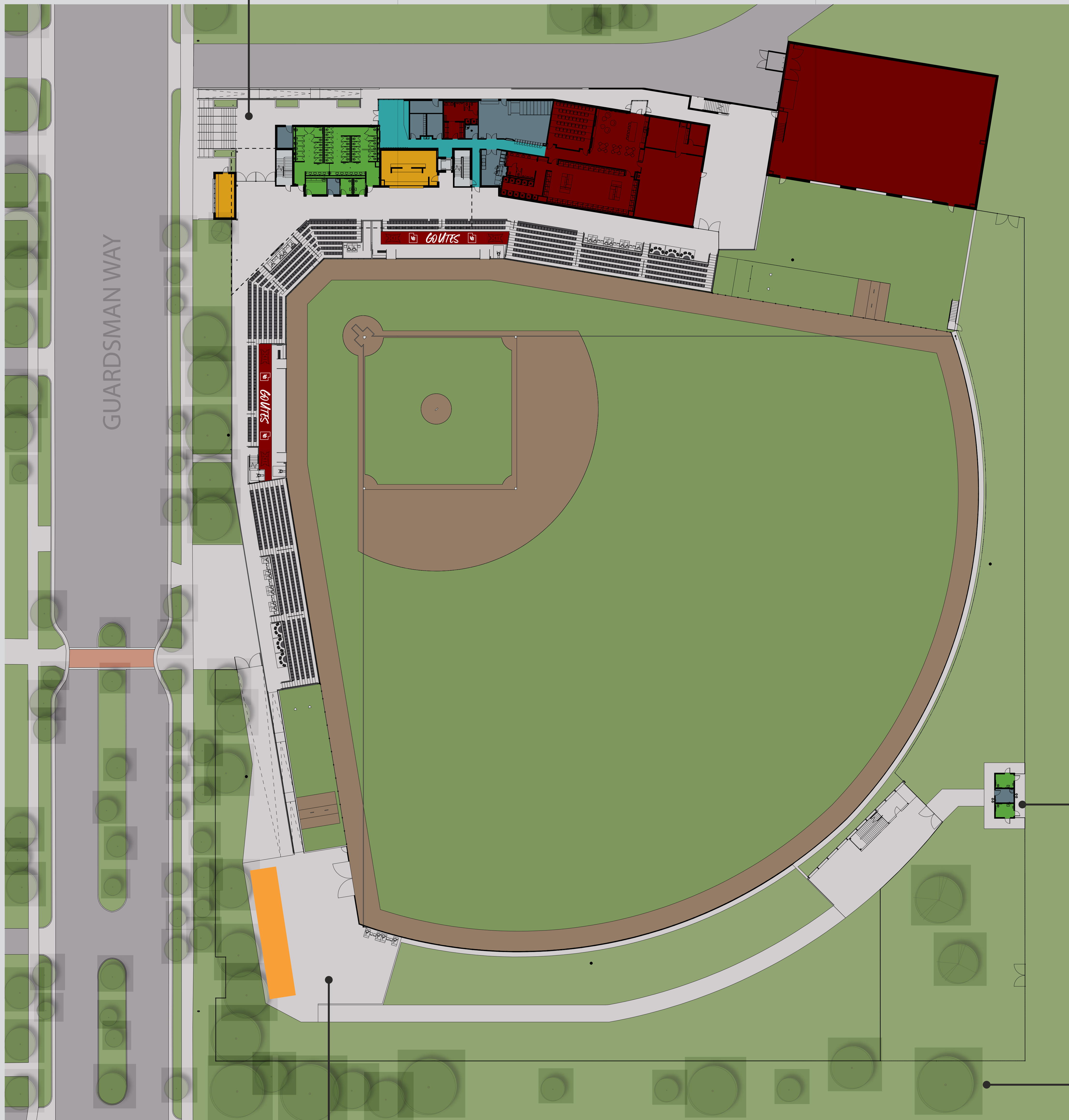
Ballpark Experience

The ballpark is an opportunity to bring people together, foster a love for baseball, and create lasting memories for fans of all ages



Ballpark Features

The main entry is located on the north side of the site



A secondary entry is available for berm seating at the southwest corner

The ballpark will include

- Ticketing, restrooms, and concessions
- Team facilities including lockers, showers, medical space, equipment storage, offices, and indoor batting/pitching cages
- Media services and support space
- Outdoor areas including the playing field, bullpens, and entry plazas
- The ballpark has up to 1,200 seats

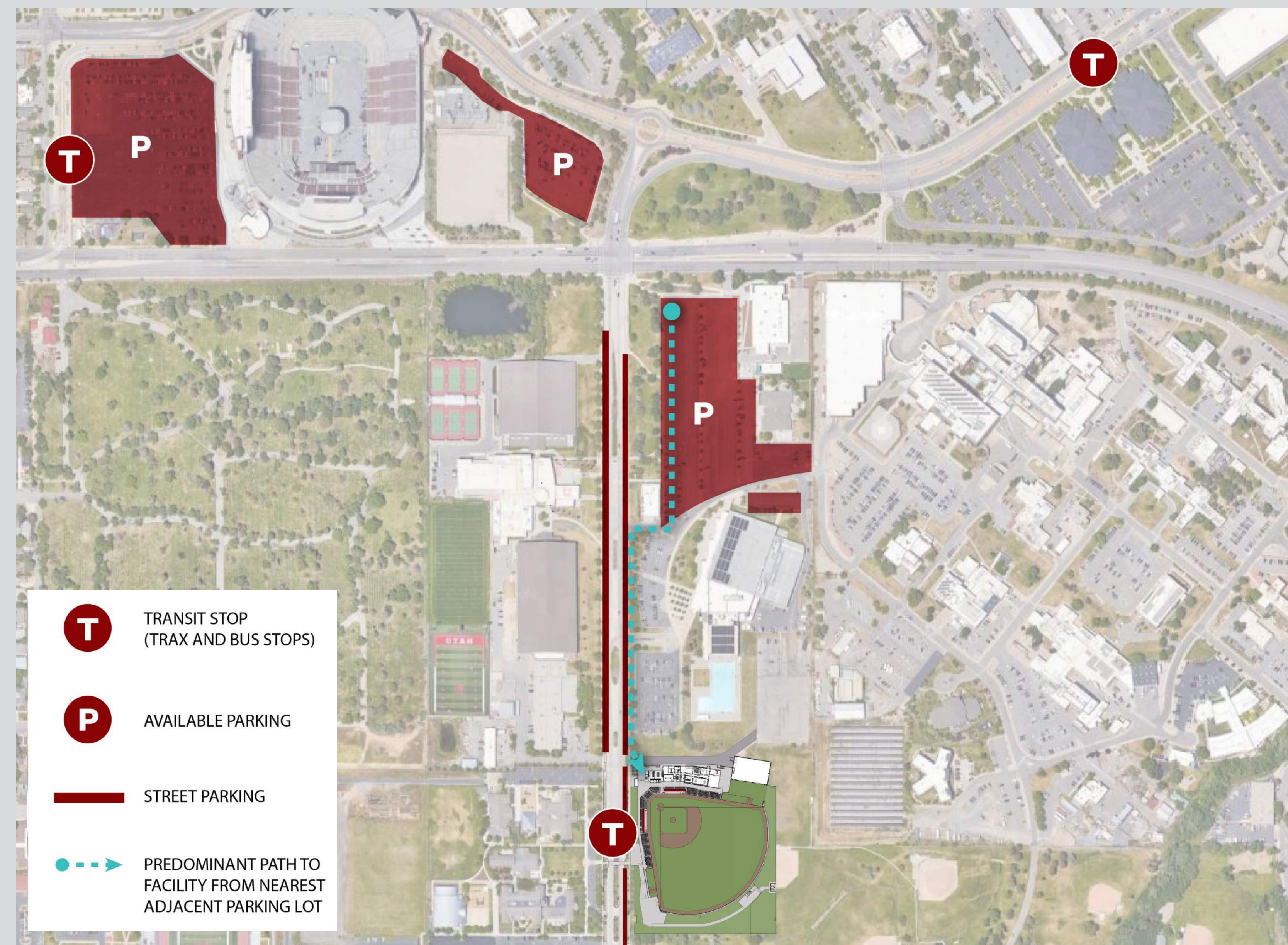
Public restrooms are located at the outfield and can be accessed from the Park

The landscape at the outfield will be enhanced with grass and trees

Ballpark Operations

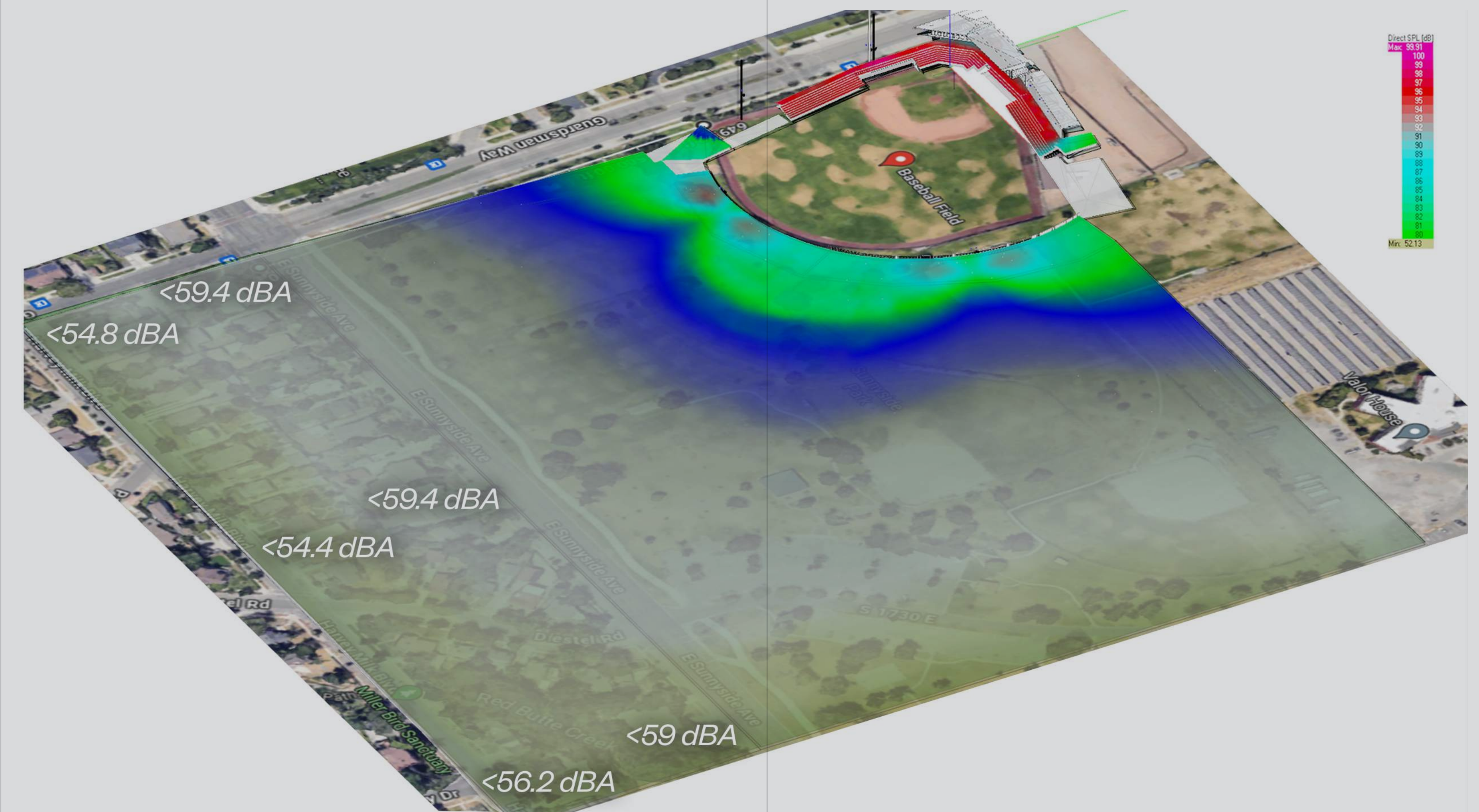
Parking and Traffic

The ballpark will use existing parking lots at the University of Utah.



Acoustics

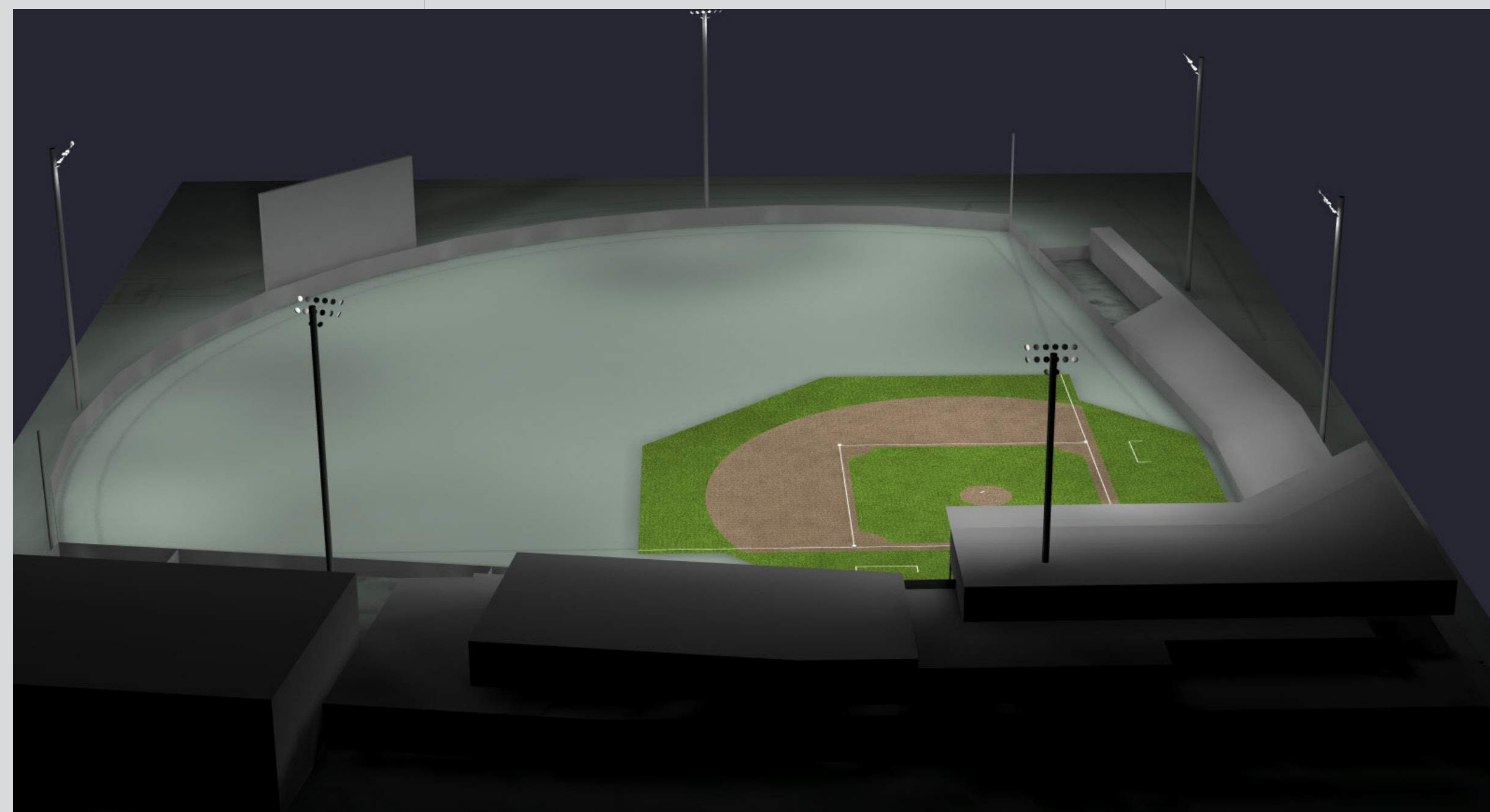
New berms at the outfield will help contain noise. A modern, distributed audio system will focus sound into the ballpark.



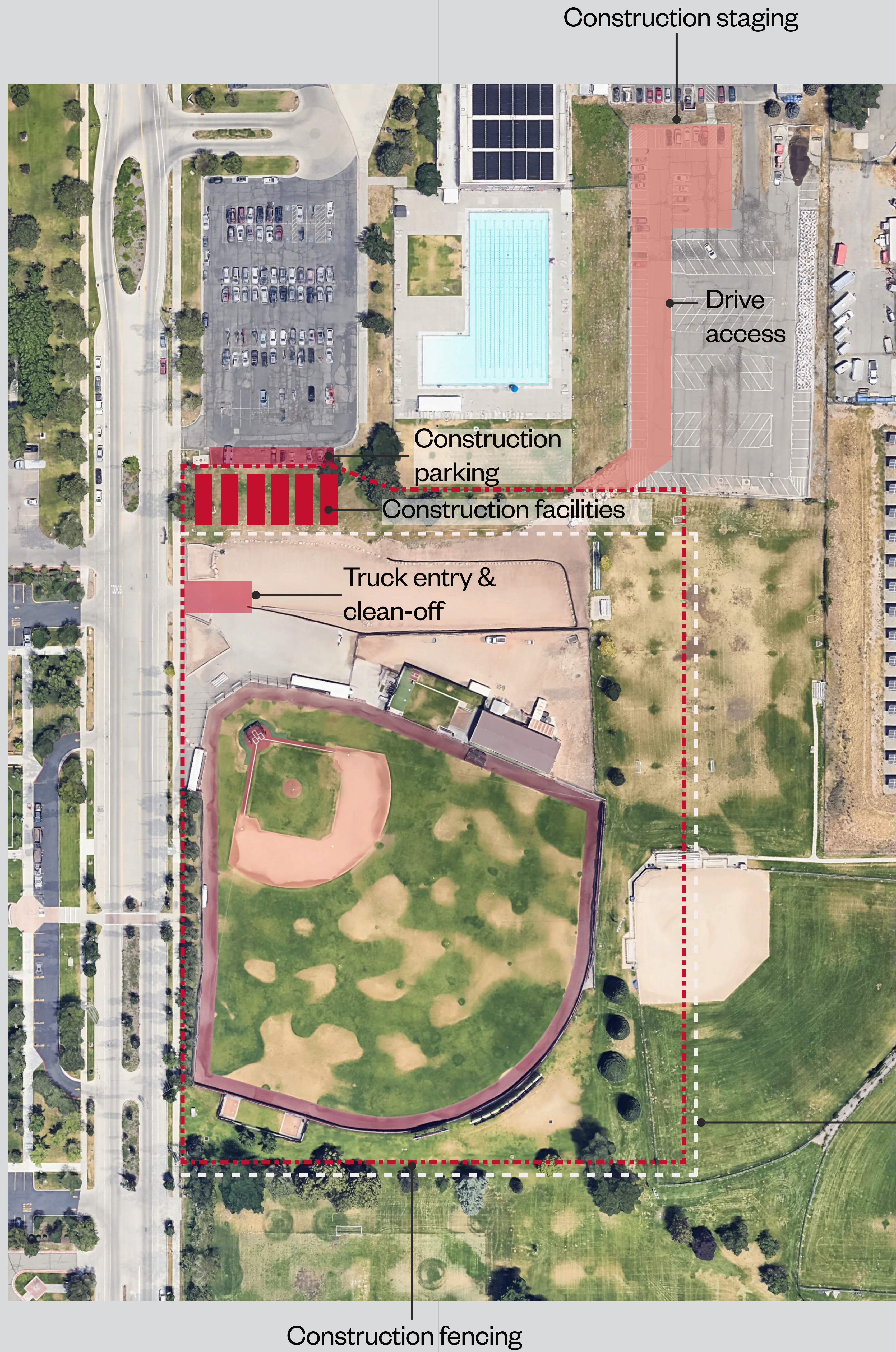
The sound level decreases to less than 60 decibels at Sunnyside Avenue. For reference, 60 decibels is equivalent to the sound level of a normal conversation.

Lighting

Lighting has been designed to direct light toward the field and reduce light spill beyond the ballpark boundaries, per the photometric model shown below.



Ballpark Construction



Construction Mobilization & Circulation

Layton Construction is the General Contractor for the new Ballpark

- Construction trailers and primary site ingress/egress will be at the northwest side of the site
- Trucks entering and exiting the site will use the same drive used to access the gravel parking lot today

Stormwater & Pollution Prevention Plan

The project will implement a comprehensive stormwater & pollution prevention plan. This includes:

- Stormwater inlets will be protected with a mesh cover to protect against construction debris entering the stormwater system
- Water trucks will be used to reduce dust across the project site
- Areas will be identified and protected where existing vegetation, such as trees, will not be disturbed by construction activity
- Construction entrances will be installed to remove mud and dirt from the tires of construction vehicles before they enter a paved roadway
- Silt fencing will be installed around the site to retain the disturbed soil and prevent runoff from entering the storm system

Proposed construction easement
- 5 feet east and south of property boundary

U OF U BASEBALL

Community Impact

The University of Utah and Salt Lake City reached an agreement to allow the ballpark to extend to the east. As a part of this agreement, the University of Utah will provide the city with \$4.2 million to improve and enhance the amenities and green spaces at Sunnyside Park.



10-Year Physical Development Plan Update

OPEN HOUSE FEEDBACK

Open house "votes" on different ideas were tallied to understand what the campus community considers important.

-600 people participated

TRANSPORTATION AND PARKING

- 13 Increase pedestrian safety
- 51 More parking
- 19 Faster access to Campus and U Health
- 18 Separate bike lanes through campus
- 9 More frequent shuttles
- 11 Skybridge and/or tunnel connections
- 32 More sidewalks
- 28 Parking technology (availability & location)
- 27 Bus, Trax stop locations
- 26 Roadway redesigns (Mario Capecchi, Foothill, South Campus Drive)
- 15 Traxexpansion ("UHealth, Research Park)
- 16 Mode separation (wheels vs feet)
- 15 Snow / ice clearance
- 13 Accessible routes on steep campus
- 13 Upper-lower campus connections

Thank you to those of you who have provided feedback over past months!

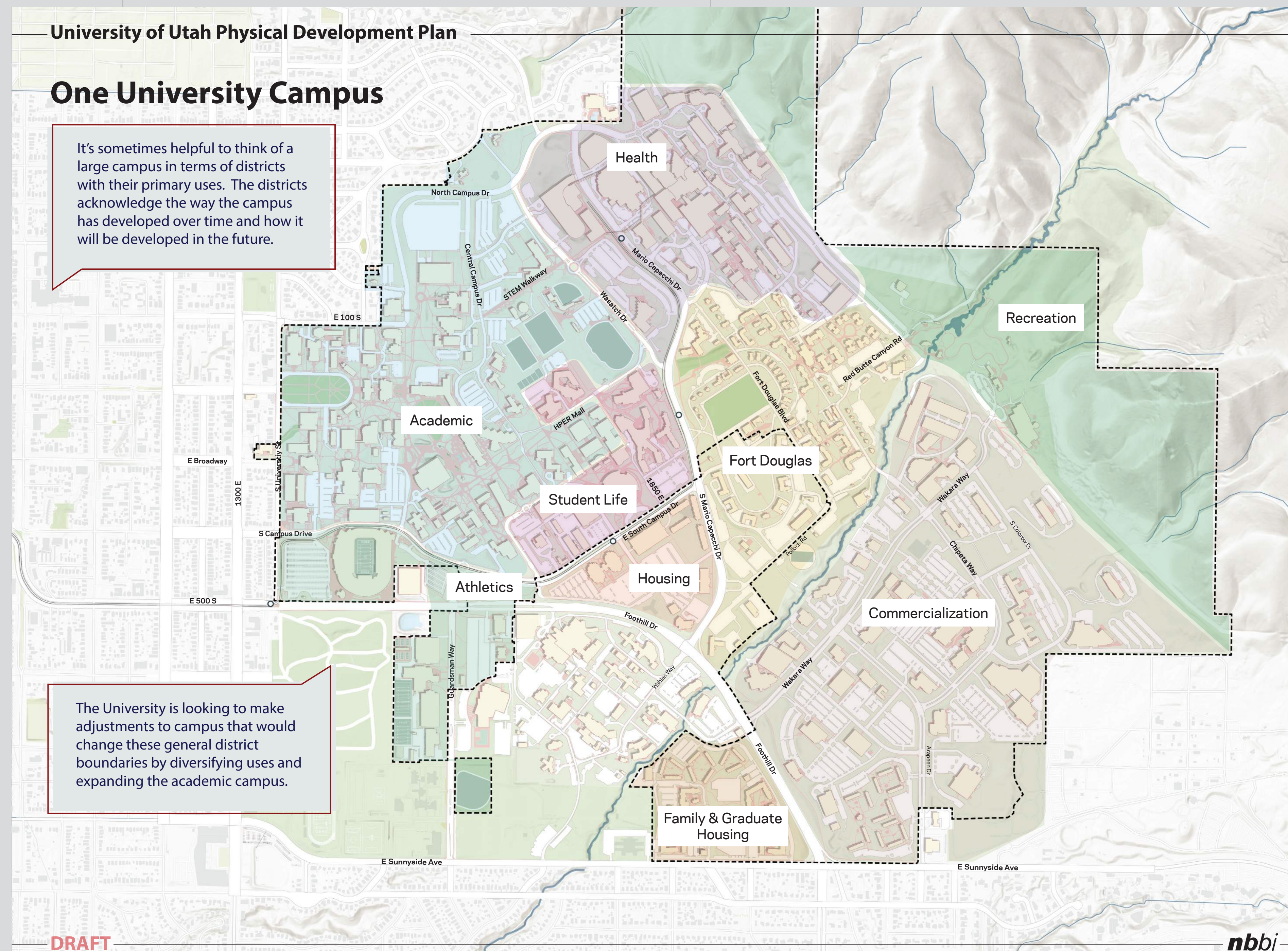
OPEN SPACE AND ECOLOGY

- 7 Integrate trails
- 14 Outdoor healing areas/Respite areas
- 9 Drinking water access
- 10 Better connections to Red Butte Garden/Creek
- 13 Picnic tables (places to eat, study)
- 10 All season enjoyment (kiosks, viewpoints)
- 10 Outdoor study areas
- 6 Enhance Red Butte Creek
- 5 Expand Pioneer Garden
- 5 Benches for rest, safety, accessibility
- 6 Campus grounds as a learning lab
- 13 Outdoor Recreation options
- 10 Diversity of vegetation & Sustainable landscapes
- 8 Preserve President's Circle (remove parking)
- 13 Trees & shade

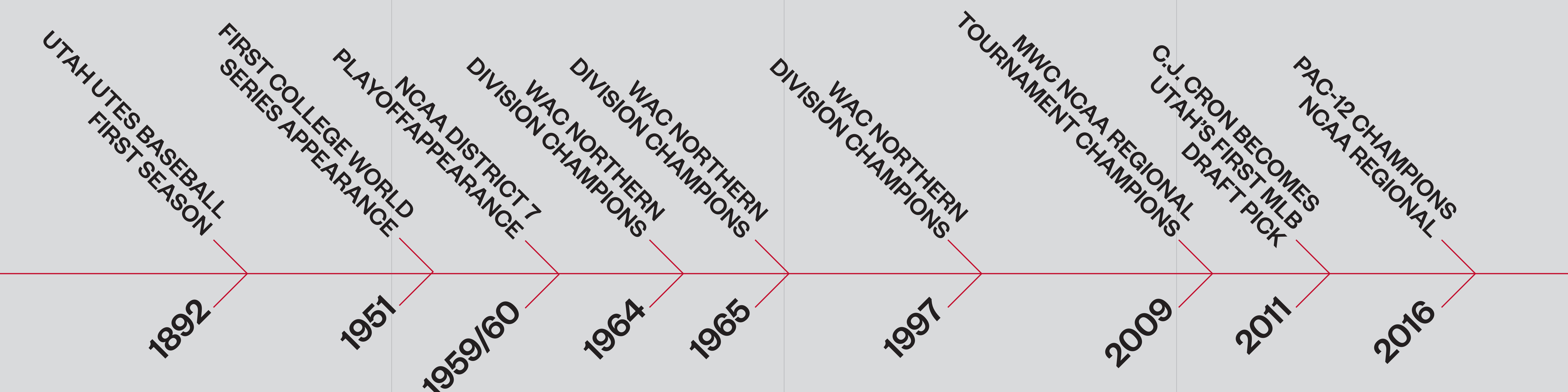


We will host a community open house in October to share the draft Physical Development Plan (PDP) and potential improvements in the next 10 years.

Please visit upd.p.utah.edu to see a summary of community feedback and stay up to date on the process.



Thank You for supporting the University of Utah Baseball



What's Next?
Groundbreaking Today!
Field Available Spring 2025
Opening Spring 2026

Follow the project progress at ballpark.utah.edu